

## Chemical Dosing Pots

### Overview

Dosing pots are required in order to feed liquid chemicals, such as corrosion inhibitors, into closed recirculating water systems.

The dosing pots consist of a steel vessel fitted with inlet and outlet valves, a drain valve and a filling valve/tundish arrangement, an air bleed valve and wall mounting brackets.

Goodwater dosing pots are supplied in four standard size capacities:

- Size 2 (3½L)
- Size 3 (6L)
- Size 4 (16L)
- Size 5 (25L)

Other non-standard sizes are made to order.

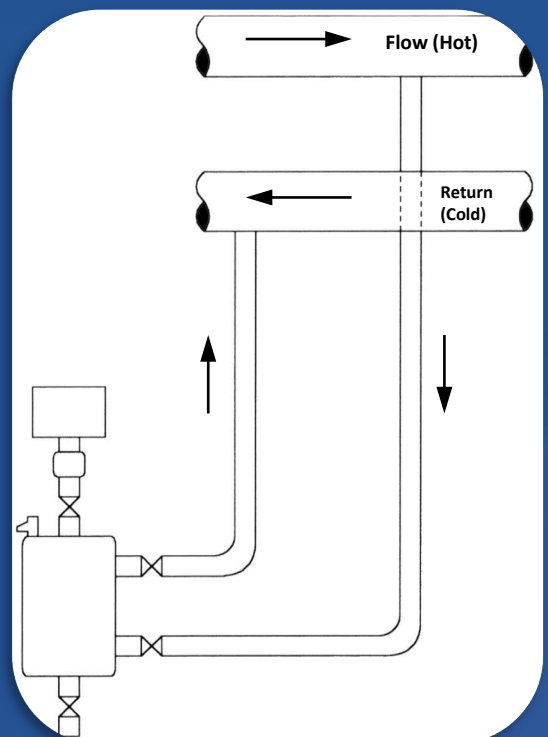
If requested, Goodwater dosing pots can also be supplied without the four ball valves and/or air bleed.

It is important that dosing pots are fitted correctly into the system to allow rapid chemical feed.

This is best achieved by connecting across the main flow/return pipework. Ideally, the flow (hot) connection should be made to the bottom of the dosing pot and the return (cold) to the top.

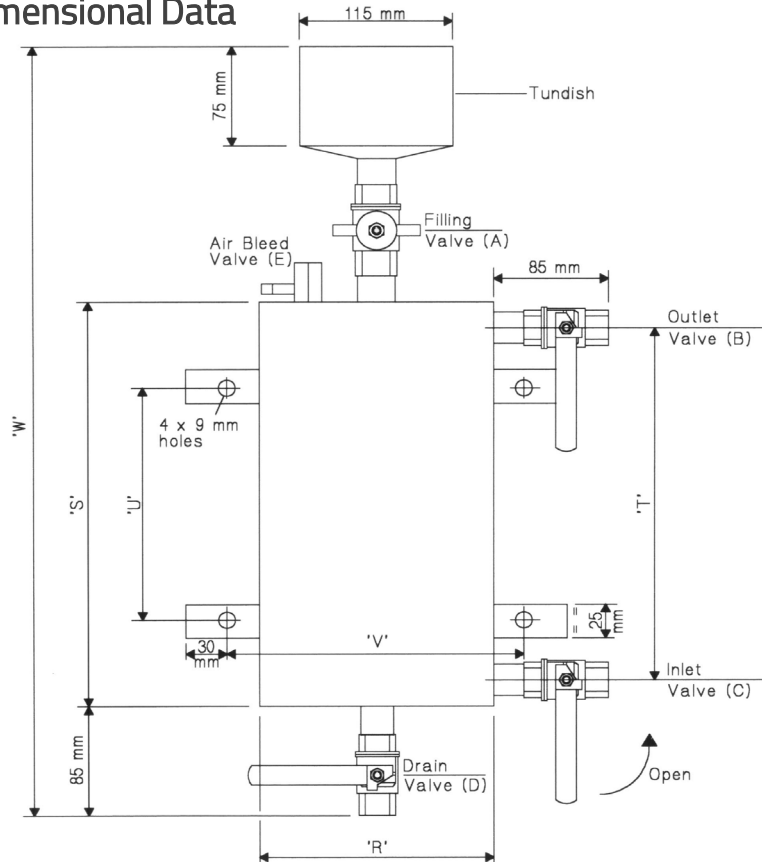
### Technical Data

Maximum Working Pressure:	7 bar
Maximum Working Temperature:	82° Celsius
Inlet/Outlet/Drain Connections:	½" BSP Female
Air Bleed Valve:	¼" BSP Female



Chemical Dosing Pots

Dosing Pots – Dimensional Data



SIZE	Units	2	3	4	5
'R'	mm	170	170	220	220
'S'	mm	165	310	460	710
'T'	mm	105	250	400	650
'U'	mm	n/a	215	365	615
'V'	mm	215	215	285	285
'W'	mm	460	620	770	1020
Volume	L	3.5	6	16	25
Shipping Weight	kg	7	12	15	20
Working Weight	kg	12	20	36	50